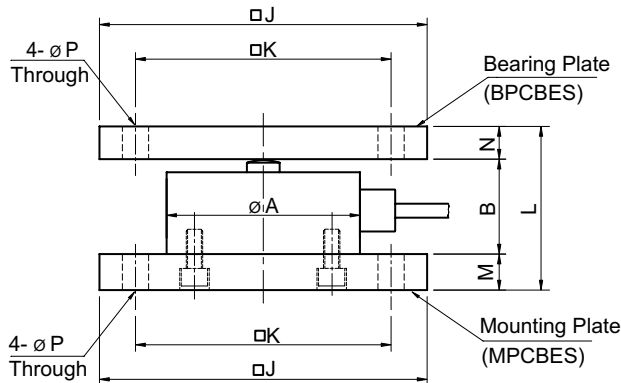
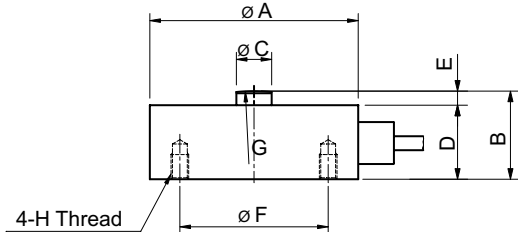
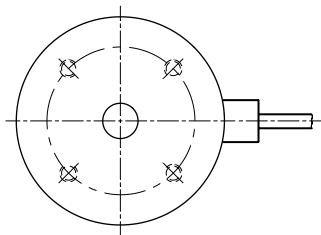


Model CBES Series

Compression
Low Profile Load Cell (50Kg ~ 20t)



The model CBES miniature type is designed for low profile compression service. Its compact size makes the cell ideal for a wide range of applications including testing & weighing systems.

- 17-4PH Stainless steel construction.
- Fully welded seal with stainless steel cover for hostile environment applications.
- Compact size with low profile.

SPECIFICATIONS

MODEL	CBES
Rated capacity (R.C.)	50,100,200,500Kg 1,2,3,5,10,20t
Rated output(R.O.)	2mV/V \pm 0.25%
Non-linearity	\leq 0.1% R.O.
Hysteresis	\leq 0.1% R.O.
Non-repeatability	\leq 0.1% R.O.
Creep error	\leq 0.03% in 20min.
Zero balance	\leq 1% R.O.
Compensated temperature range	-10 ~ 70°C
Operating temperature range	-20 ~ 80°C
Temp. effect on rated output	\leq 0.1% LOAD/10 °C
Temp. effect on zero balance	\leq 0.1% R.O./10 °C
Terminal input resistance	700 Ohms \pm 10 Ohms
Terminal output resistance	700 Ohms \pm 10 Ohms
Insulation resistance (Min.)	2000 MOhms at 50V DC
Excitation Voltage	10V(Recommended) /15V(Maximum)
Electrical connection	(50Kg ~ 2t) \varnothing 5mmx3m(22AWG x 4Core Shielded) (3t ~20t) \varnothing 9mmx5m(22AWG x 4Core Shielded)
Protection class	meets IP 67
Safe overload	150% R.C
Ultimate overload	300% R.C

ORDERING INFORMATION

1T

MODEL CAPACITY
50,100,200,500Kg
1,2,3,5,10,20t

WIRING INFORMATION

RED : EXC. (+) WHITE : EXC. (-)
GREEN : SIG. (+) BLUE : SIG. (-)
BARE : GND

Capacity	A	B	C	D	E	F	G	H	J	K	L	M	N	P	Bearing plate	Mounting plate	Weight (kg)
50kg ~ 2t (490.3N ~19.61KN)	52	25	10	21	4	42	R50	M5x0.8P DEPTH 7	100	78	55	15	15	8	BPCBES-1	MPCBES-1	0.35
3t ~10t (29.42KN ~98.07KN)	98	45	20	40	5	72	R150	M6x1P DEPTH 8	160	126	105	30	30	14	BPCBES-2	MPCBES-2	2.3
20t (196.1KN)	118	50	20	45	5	90	R250	M8x1.25P DEPTH 15	160	126	110	30	30	14	BPCBES-3	MPCBES-3	3.7

* Specifications are subject to change without notice